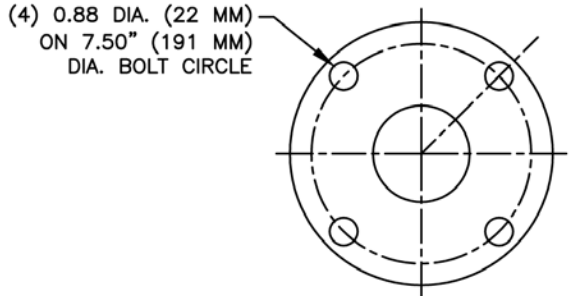


| NO. | PART NAME      | MATERIAL         |
|-----|----------------|------------------|
| 1   | VENT VALVE     | GLASS-FILLED PPL |
| 2   | COVER          | GLASS-FILLED PPL |
| 3   | BODY           | GLASS-FILLED PPL |
| 4   | BASKET         | GLASS-FILLED PPL |
| 5   | FLANGE ADAPTER | 2" CL. 150 PPL   |
| 6   | PLUG           | GLASS-FILLED PPL |
| 7   | O-RING         | VITON            |
| 8   | BAG RETAINER   | GLASS-FILLED PPL |
| 9   | O-RING         | VITON            |

- NOTES:
- PRESSURE RATING: 150 PSI @ 70° F (NON SHOCK) (10.3 BAR @ 21° C)
  - VENT GAUGE AND DIFFERENTIAL PRESSURE GAUGE ARE OPTIONAL.
  - INLET CONNECTION: 2" (50mm) FLANGE  
OUTLET/DRAIN CONNECTION: 2" (50mm) FLANGE
  - BAG SIZES:  
BAG #1-SINGLE LENGTH (FITS 210102F00)  
7" X 16" (2.0 SQ.FT.)  
178 MM X 406 MM (1858 SQ.CM.)  
BAG #2-DOUBLE LENGTH (FITS 210202F00)  
7" X 32" (4.1 SQ.FT.)  
178 MM X 813 MM (3809 SQ.CM.)
  - FOR METAL PIPING INSTALLATION, A MINIMUM OF 20" PLASTIC PIPE IS REQUIRED ON UPSTREAM AND DOWNSTREAM OF FILTER VESSEL.



CERTIFIED FOR:  
P.O. NO.:  
REG. NO.:  
QUOTE NO.:  
TAG NO.:

| PART NO. | A    |     | B   |     | C    |     | D     |      | E   |     | F     |     | G    |     | H     |      | WT. (DRY) |     |
|----------|------|-----|-----|-----|------|-----|-------|------|-----|-----|-------|-----|------|-----|-------|------|-----------|-----|
|          | IN.  | MM. | IN. | MM. | IN.  | MM. | IN.   | MM.  | IN. | MM. | IN.   | MM. | IN.  | MM. | IN.   | MM.  | LBS.      | KG. |
| FLT4201F | 5.69 | 145 | 10  | 254 | 3.25 | 83  | 34.12 | 867  | 20  | 508 | 18.38 | 467 | 8.63 | 219 | 23.88 | 607  | 53        | 24  |
| FLT4202F | 5.69 | 145 | 10  | 254 | 3.25 | 83  | 50.12 | 1273 | 36  | 914 | 18.38 | 467 | 8.63 | 219 | 39.88 | 1013 | 66        | 30  |

Monarch Group - Filters, Strainers & Pipeline Equipment  
Australia - www.monarchindustrial.com.au  
Thailand - www.psfthailand.com

**FATON**

NAME: POLYLINE BAG FILTER  
FLANGE CONNECTION  
SIZE 2" POLYPROPYLENE

DRAWN FM DATE 10/4/96 CERT. LF DATE 10/4/96

SIZE A DWG NO. SD02100F REV D

UNAUTHORIZED USE, MANUFACTURE OR REPRODUCTION IN WHOLE OR IN PART IS PROHIBITED.

ELECTRONIC FILE NAME: SD02100F.DWG

REF. ECR D507 DATE 1/30/06